

WIMBLEDON COMMUNITY FORUM  
25 MARCH 2021

(7.15 pm - 9.00 pm)

PRESENT Councillors Councillor James Holmes (in the Chair),

## 1 WELCOME AND INTRODUCTIONS (Agenda Item 1)

The meeting was held via Zoom, and chaired by Councillor James Holmes. Twelve residents and nine councillors attended on Zoom with 63 additional views on YouTube. The Chair welcomed everyone to the meeting and explained how the meeting would work.

## 2 CLIMATE CHANGE ACTION PLAN (Agenda Item 2)

Katie Halter, Climate Change Officer gave a presentation on the Climate Change Action Plan. The presentation is attached to this report. The Climate Change Strategy was adopted in November 2020 and the deliver plan was adopted in February 2021. The Plan covers Merton Council's work to decarbonise and support it can give to others.

There has been a 40% reduction in Merton Council estate emissions since 2009. Merton Council took a number of actions in 2020 including switching to 100% renewable electricity; completing the roll out of LED street lights; spending £0.5m to decarbonise children's centres and community buildings; £400,000 from the Neighbourhood Fund being spent on a Warmer Homes Project; updating the Local Plan and campaigns such as Climate Champions in GP surgeries.

Plans in 2021 include new [community pledges](#), another round of [Solar Together](#), and new [Action Groups](#) to encourage community projects. You can register for [email updates](#) on this work.

## 3 2021 CENSUS (Agenda Item 3)

Matthew Hopkins, Census Engagement Manager for the Office of National Statistics (ONS), gave a presentation on the 2021 Census. The presentation is attached to this report. Census day was 21 March 2021 and this is a digital-first census with most households able to complete the form online. For those without digital access they will be able to request a paper copy and ONS field staff will visit households who have not completed their census form and can provide paper copies. Help will also

be available online, through a call centre and locally from Merton Voluntary Service Council.

A resident asked why there isn't a box for Crown Servants and other trade reps serving abroad who would be unaccounted for in the census, census only mentions Armed Forces. Matthew said that crown servants would be accounted for in the same way as others working overseas and that the Armed Forces question relates to veterans rather than service officers.

#### 4 COVID UPDATE (Agenda Item 4)

Kaz Obuka and Fiona White from South West London Clinical Commissioning Group gave a presentation on the take up of the COVID-19 vaccine in Merton. The presentation is attached to this report.

Kaz said the vaccination programme has been going well with more than 66,000 having received their first dose, all either over 50 or considered clinically vulnerable. They have been reaching out to communities within Merton including 35 online workshops with more than 900 attendees. Fiona said the work would continue to target communities like homeless, asylum seekers, and women's refuges with more vaccination events in community facilities.

Cllr Kohler said that the three cohorts of over 70 years olds had all hit around 84% is that a natural ceiling. Fiona said that the target is 92% and we have not hit a ceiling as yet so we still expect the numbers in these groups to go up.

Cllr Fairclough asked if there were any stats for the uptake in local care homes. Fiona said they are still going back to care homes as residents may not yet have had a second vaccination and we are finding that staff that were initially reluctant were now changing their minds.

A resident asked about people in Merton having to leave the borough to receive the vaccine. Fiona said that care workers may be vaccinated at work and in-patients in their hospital but otherwise we are using a range of venues with more to coming available. A resident asked about how long vaccines will last, Fiona said some vaccines take 3 weeks to build up immunity and we think they may last 6-12 months but we do not yet know. It is possible boosters may be needed but we do not know yet. Fiona also confirmed that you should receive the same vaccine in both rounds.

Cllr Ormerod asked about vaccinations for children. Fiona said trials with teenagers are currently taking place. A resident expressed their thanks to NHS staff for running such an amazing service.

#### 5 ANY OTHER BUSINESS (Agenda Item )

Suzanne Grocott gave a presentation on the Wimbledon Neighbourhood Plan which is attached to this report. PlanWimbledon is a community group that has been running for a year and aims to create a better more sustainable Wimbledon. There are more than 300 members including residents associations, businesses and individuals. PlanWimbledon has applied to Merton Council to become a Neighbourhood Forum so they can write a Neighbourhood Plan. The Cabinet has approved a six week [consultation](#), which runs until 12 April. The main questions are is this the right area, covering about 40,000 residents, and should PlanWimbledon be the Forum to write the Neighbourhood Plan.

A resident asked what the point of the plan is and does it have any legal weight at all to make a difference. Suzanne explained that Neighbourhood plans do have legal weight once they have been approved by a referendum. The Plan forms part of the statutory framework in line with national policies, the London Plan and the borough Local Plan. The Plan can change non-strategic policies and can give more detail than the other policies. A resident asked if PlanWimbledon will be a consultee on planning applications and Suzanne said it will be a stakeholder for Merton Council to consult.

A resident asked about traffic management in Wimbledon, specifically on Haydon Park North. As the consultation on a Low Traffic Neighbourhood has not been successful what other traffic management plans would be considered. This will be raised with the Highways Team.

## 6 DATE OF NEXT MEETING (Agenda Item 5)

Councillor Holmes thanked everyone for attending and closed the meeting.

The date of next meeting:  
7.15pm Wednesday 16 June 2021

This page is intentionally left blank

# Merton Climate Change Update

Katie Halter,  
Climate Change Officer  
March 2020



# A framework to meet net-zero targets....

Since the Declaration of a climate emergency, we have developed a sound strategic approach and a framework for delivery.

**Merton's Climate Strategy and Action Plan** was adopted in November 2020.

**Climate Delivery Plan – Year 1** adopted in January 2021



# Merton Climate Action Plan

19%  
of borough  
emissions

## Transport

### What you can do:

Reduce car use in favour of walking and cycling

Switch to ultra-low emission vehicles such as electric

Schools and businesses adopt travel plans

Avoid flying

### What the Council will do:

Support new cycle paths and wider pavements

Work with TfL for faster transport decarbonisation and vehicle share schemes

Consult on emission-based parking charges

81%  
of borough  
emissions

## Buildings & Energy

### What the Council will do: What you can do:

Require new buildings to be low carbon and resilient to the impacts of climate change

Lobby for tighter regulations and further funding for low carbon buildings

Save energy by switching off appliances and turning down the heating

Use green electricity

Avoid gas by buying a low carbon heating system (e.g. a heat pump)

Invest in insulation and renewable energy

-0.1%  
of borough  
emissions

## Green spaces

### What you can do:

Grow vegetation around your home

Remove paving from your front garden to plant trees

Join or sponsor a community planting group

### What the Council will do:

Maintain existing green spaces and plant more trees

Major  
contributor  
of  
emissions

## Green Economy

### What the Council will do:

Encourage waste reduction

Help build low carbon skills

Encourage green businesses

### What you can do:

Buy green and local products

Eat less meat, fish and dairy

Reuse items and buy products with less packaging



# Actions in 2020

We continued to reduce emissions from the Council's estate.

Shift to 100% **renewable electricity.**

Completed LED **streetlight programme.**

Bid for £0.5 M grant to **decarbonise children's centres** and community buildings.





# Actions in 2020

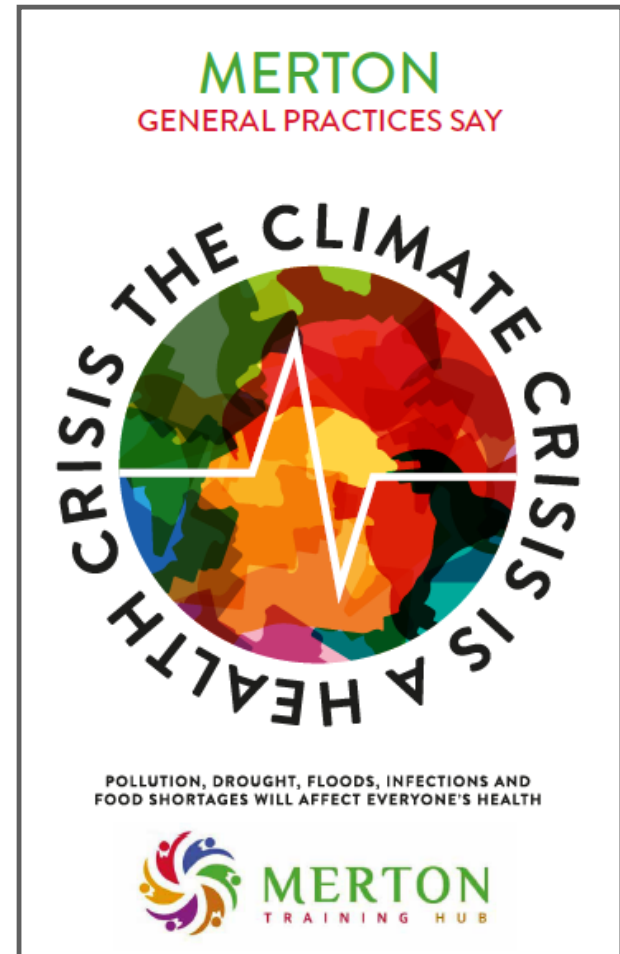
We continued to support emissions reductions within the borough

£400,000 of **Neighbourhood Fund** allocated to climate reduction projects

More funding for **Warmer Homes** Project

Draft **Local Plan** policies consistent with Climate targets

**Campaigns** to support change, such as Climate Champions in GP practices.



# Coming up in 2021

## Register for new **email updates**

Google “Merton climate emergency”

Sign up to receive future updates on  
Merton's Climate Strategy and Action Plan

## Make a climate change pledge

Pledge to make Merton a net-zero carbon borough by 2050.

Make your climate change pledge

## Make a **pledge**

Google “Merton climate pledge”

## The Big Pedal – register your school!

[www.bigpedal.org.uk](http://www.bigpedal.org.uk)



## Join the **Climate Action Group**

Google “Merton climate action group”

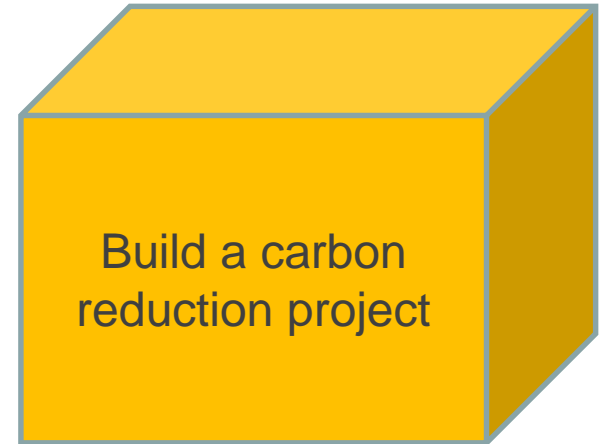
# How the Climate Action Group will work

Page 73

Want to take action?  
Have an idea?

Come to a meeting

Build a carbon reduction project



# Climate Action Group Structure

## Co-Chairs

Ramya Venkataraman: [cag.engagement@gmail.com](mailto:cag.engagement@gmail.com)  
Cllr Martin Whelton: [Martin.Whelton@merton.gov.uk](mailto:Martin.Whelton@merton.gov.uk)

## Engagement and Funding

Ramya Venkataraman: [cag.engagement@gmail.com](mailto:cag.engagement@gmail.com)

Page 78

### Green Economy

Diana Sterck  
Carola Grillo  
[cag.greenconomy@gmail.com](mailto:cag.greenconomy@gmail.com)

### Buildings and Energy

Katie Halter  
[cag.buildings@gmail.com](mailto:cag.buildings@gmail.com)

### Transport

Luke McCarthy  
Mehmood  
Naqshbandi  
[Transport.CAG.Merton@gmail.com](mailto:Transport.CAG.Merton@gmail.com)

### Greening Merton

Kelly Gunnell  
[cag.greeningmerton@gmail.com](mailto:cag.greeningmerton@gmail.com)

## Group Support

Dominique Hill: [Dominique.Hill@merton.gov.uk](mailto:Dominique.Hill@merton.gov.uk)  
Katie Halter: [Katie.Halter@merton.gov.uk](mailto:Katie.Halter@merton.gov.uk)

# Next Steps

## Meeting dates

Wednesday 31st March – Greening Merton

Wednesday 28th April – Building & Energy

Wednesday 26th May – Transport

Wednesday 30th June – Progress Meeting

## Keep in touch

- Check the Climate Action Group website or sign up for climate updates
- Contact a community lead or climate change officer

# End



**census**  
2021

# Helping everyone take part in Census 2021

**Matthew Hopkins**  
**ONS Census Engagement Manager, Merton**

# The census

- The census is a survey that happens every 10 years and everyone takes part.
- The ONS is responsible for the census in England and Wales.
- The census is important because it gives the most detailed information we have about our society.





# Billions of pounds are allocated to local services using census-based information every year

Page 79 So that these funds can be allocated in the most appropriate and effective ways, it's important the census accurately captures everyone in our society.

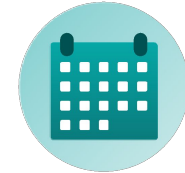


# No one knows your community better than you

- By taking part and encouraging others to do the same, you'll help make sure your community is counted in decisions on services and funding.
- We understand that building positive relationships with communities means more people understand the benefits of the census and are likely to take part.
- We need your help to raise awareness and understanding of the census in your community.

# Census 2021 facts

- The next census will take place on **Sunday 21 March 2021.**
- For the first time this will be a **digital-first** census, but paper will be available for those who need it.
- We'll focus on engaging with everyone, including under-represented and **hard to reach groups.**
- Help will be available for people who need support to take part online.



# Keeping personal information safe

- Before publishing statistics, the ONS make sure that they don't include any personal information.
- The information collected in the census remains anonymous for 100 years.
- No individual or their responses can be identified in the statistics the ONS publish.
- Everyone must complete the census. Legislation made the modern census a legal obligation in 1920.



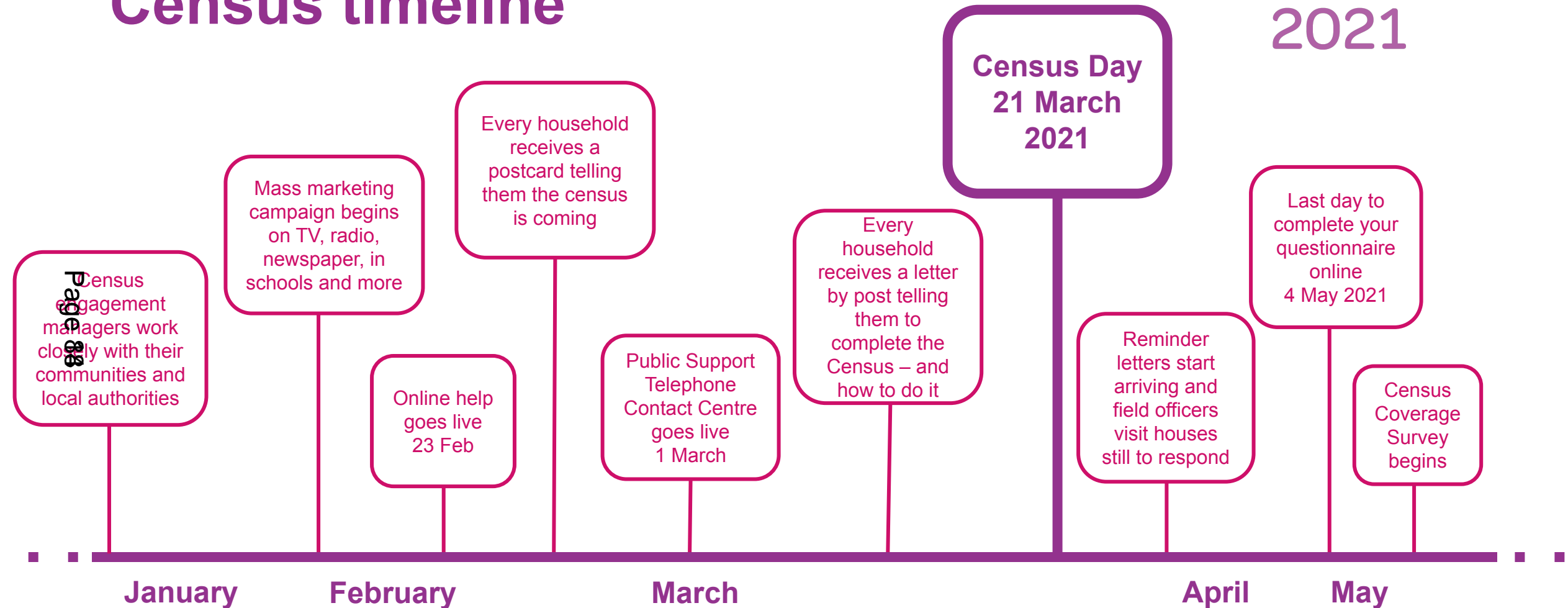
# Keeping personal information safe

- Personal census information can't be used to change any service an individual gets, and it can't be seen by anyone who makes decisions about them.
- For example, it cannot be seen or used by government to influence benefit claims, a residency application, immigration status or taxes, or by landlords or any other private organisation



# Census timeline

**census**  
2021



# Advanced Postcard

census  
2021

Page 89

Sent to every household - mid to end of **February**

Inform people that the census is coming.

Calls upon recipients to look out for their census invitation pack in the post.



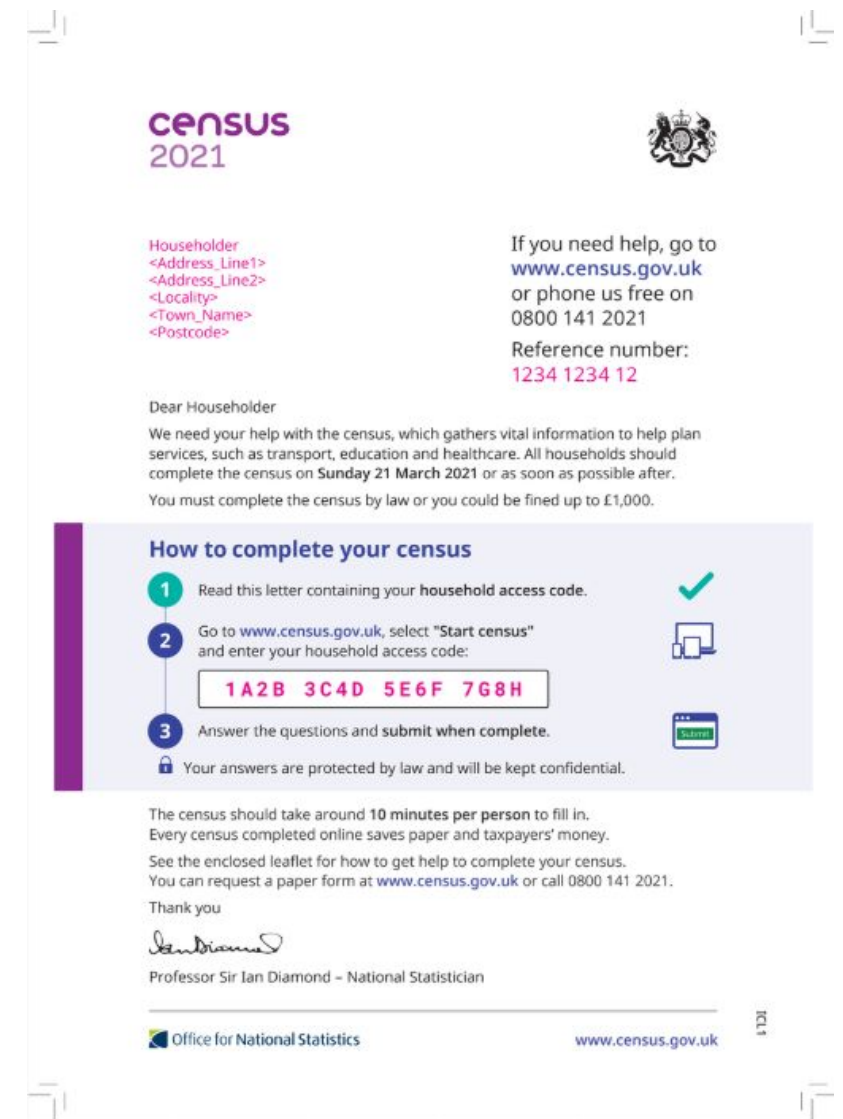
# Initial Contact Packs - Letter

Page 20

Sent to households **beginning of March**

Provide households with their access code for the electronic questionnaire.

Provide help options - including where to request a paper questionnaire.





# Initial Contact Packs - Information

**census**  
2021

Included with the letter

Provide households with answers to common questions about the census and how to complete the form.

Communicate different methods of contact for getting help.



## What the census is

The census is a survey that happens every 10 years and gives us a picture of all the people and households in England and Wales.

## Why you have to take part

Organisations such as local authorities and charities use census information to understand the services we all need, including transport, education and healthcare.

You must complete the census by law. If you do not, or if you supply false information, you could be fined up to £1,000.

Some questions are clearly labelled as being voluntary. It is not an offence if you do not answer these.

## When to complete your census form

You should complete your census form on Sunday 21 March 2021 or as soon as possible after.

You can submit your completed questionnaire before 21 March if you know who will be in your household on that day. If you submit your questionnaire before 21 March but your circumstances change before that day, you can let us know.

## Who should fill it in

The householder should fill in the census for the household. This is the person who owns or rents (or jointly owns or rents) the property, or the person who is responsible (or jointly responsible) for paying household bills and expenses.

## Answering separately from your household

If you want to answer separately from the people you live with, you can contact us to request an individual access code. Someone must still complete a census for your household.

# Making it accessible for all

- Large print format
- Braille format
- Accessible videos with BSL, audio & subtitles
- Easy Read leaflet
- Text Relay
- Compatible electronic questionnaire
- Online guidance
- Translation booklets of the questionnaire
- Language support line



# Online & Language support

## Dedicated Contact Centre

- People will be able complete the census over the phone with help from trained staff via free phone.
- Guidance and translation service in many languages.
- Request a paper version of the questionnaire.
- Accessible census guidance, for example, in braille



# Language support

---

Translated versions of a number of engagement communications in 49 languages e.g.

| Languages  |           |                                |
|------------|-----------|--------------------------------|
| Arabic     | Czech     | Hebrew                         |
| French     | Hungarian | Urdu                           |
| Bengali    | Bulgarian | Somali                         |
| Mandarin   | Polish    | Spanish                        |
| Cantonese  | Romanes   | Portuguese                     |
| Cornish    | Punjabi   | Kurdish                        |
| Romanian   | Gujrati   | Tamil                          |
| Lithuanian | Hindi     | Vietnamese                     |
| Latvian    | Nepali    | Turkish                        |
| Slovak     | Yiddish   | Additional languages available |

## What you can do

- Support people to fill in their questionnaire
- Direct people to the telephone and language support
- Help to promote the message that personal census information is kept safe and secure
- Post news items or articles if you are able to communicate online with your community

# Keep in touch

## Census Engagement Managers for Merton:

[matthew.hopkins05@field.census.gov.uk](mailto:matthew.hopkins05@field.census.gov.uk)

+44 (0)7452 945152

- Bookmark the Census 2021 website: [www.census.gov.uk](http://www.census.gov.uk)
- Follow us on social Media [#Census2021](https://twitter.com/Census2021)

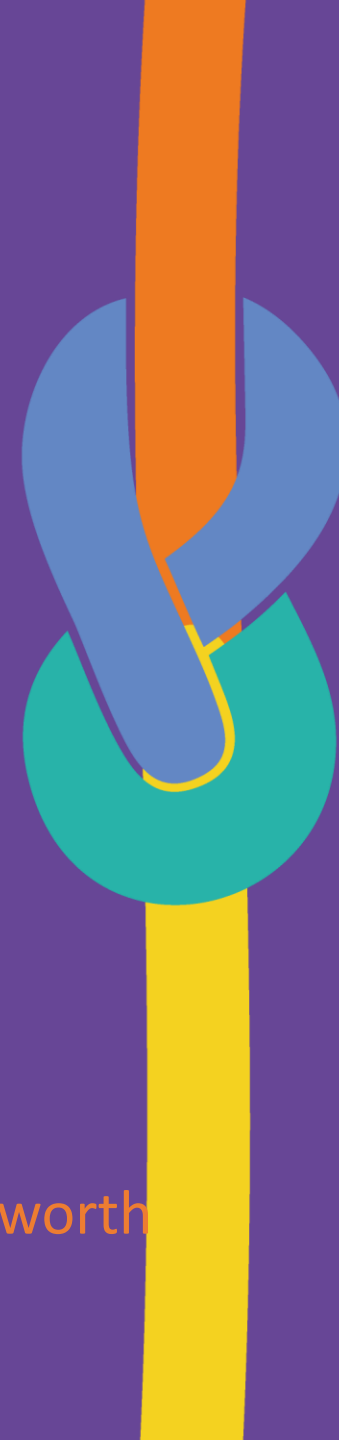


# COVID-19 vaccination: your questions answered

Page 23

**Fiona White** - Quality Assurance Manager and Nurse Consultant  
NHS Merton, South West London Clinical Commissioning Group

**Kalu Obuka** - Head of Engagement and Equalities, Merton & Wandsworth  
South West London Clinical Commissioning Group



Aim of the session: To support our community around understanding COVID-19 and the vaccination programme

- The COVID -19 vaccination



# Number of Merton COVID-19 cases

15,977 (published Tuesday 23 March 2021)

## Merton Vaccination Uptake

Based on the weekly published NHS data set, which is available [here](#).

Page 29 Merton figures (as of the last publication on the 18<sup>th</sup> March).

|             | Number of people vaccinated with at least 1 dose |       |       |       |       |       |       |
|-------------|--|-------|-------|-------|-------|-------|-------|
|             | Under 55   | 55-59 | 60-64 | 65-69 | 70-74 | 75-79 | 80+   |
| Merton      | 25,348   | 8,004 | 8,217 | 7,062 | 6,417 | 4,368 | 6,794 |
| % achieved* | 33.8%  | 55.8% | 70.6% | 79.3% | 83.6% | 83.9% | 83.6% |

Average vaccination uptake achieved for Wimbledon Park Ward – 68.0%

\*Percentages as of 16<sup>th</sup> March. Data is draft and subject to change due to multiple local and national sources.

## Why use a vaccine?

- Vaccines are crucial and part of our defence against infectious diseases.
- When enough people get vaccinated, it's harder for a disease to spread to those who can't have vaccines.

Page 96

Getting vaccinated protects not only you but also your family, friends and community.

- Vaccines are made to prevent people from getting serious infectious diseases. It's much safer for your immune system to learn to fight illness through vaccination than by catching and treating them.
- At present we don't know whether it stops you spreading the virus to other people, so you still need to wear a mask, wash your hands and social distance after you have been vaccinated.

[Find out more about vaccines and why they are safe and important](#)



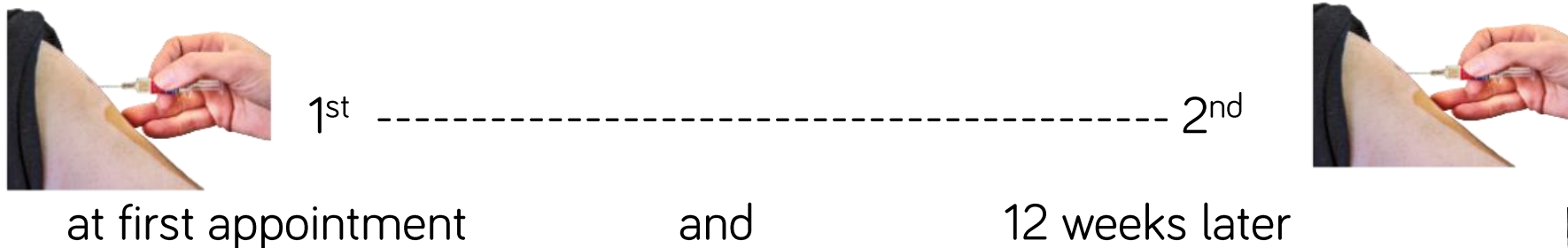
## What vaccines are currently available?

- Pfizer/BioNTech
- Oxford/AstraZeneca COVID-19 vaccines are now available
- Vaccines have to pass their rigorous tests on safety and efficacy, so people should be assured that whatever vaccine they get will be safe and effective.

Page 97

You may have heard about new coronavirus vaccines in the media, including those from Moderna and Novavax. We don't have full information about the new vaccines yet, but can assure that any vaccines that the NHS will provide will have been approved by the MHRA. Vaccines have to pass their rigorous tests on safety and efficacy, so people should be assured that whatever vaccine they get will be safe and effective.

# You will have two injections in your arm



Page 98

Your practice will let you know when you need to come back.

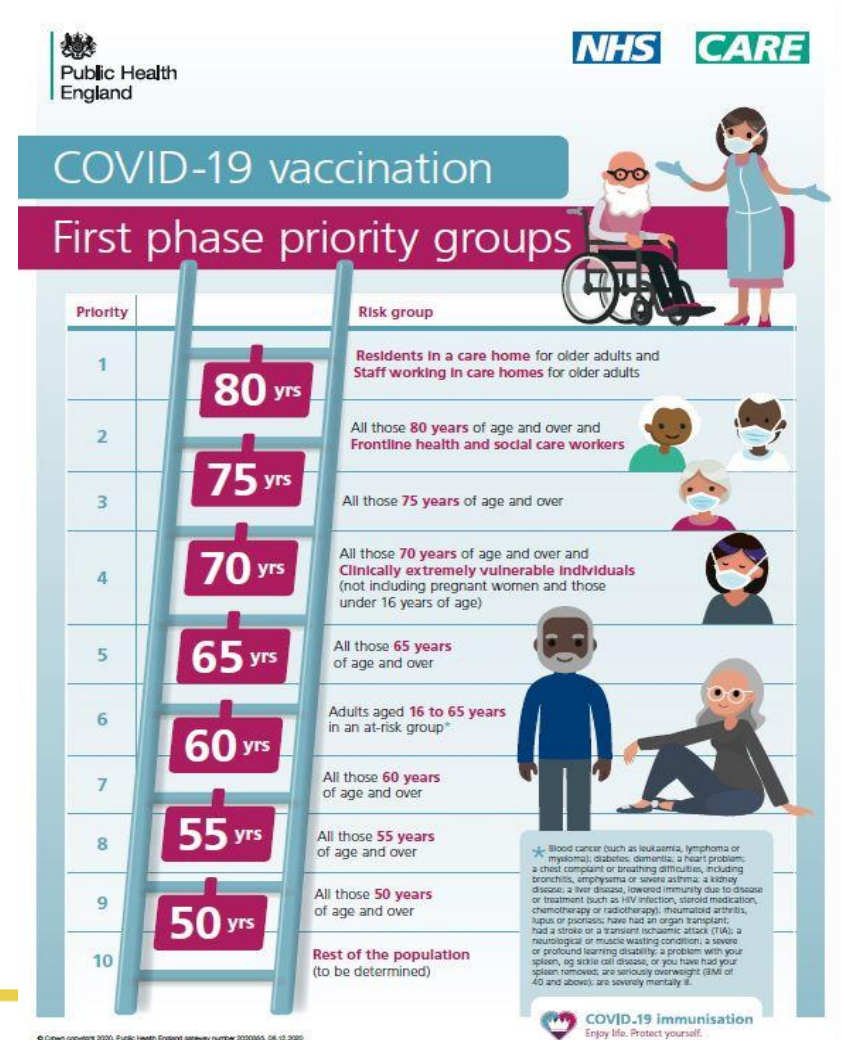
After three weeks you will be safer from the virus



# Who will get the COVID-19 vaccine and when?

- The JCVI priority list is as follows:
  1. residents in a care home for older adults and their carers
  2. all those 80 years of age and over and frontline health and social care workers
  3. all those 75 years of age and over
  4. all those 70 years of age and over and clinically extremely vulnerable individuals
  5. all those 65 years of age and over
  6. all individuals aged 16 years\* / 18 years to 64 years with underlying health conditions which put them at higher risk of serious disease and mortality
  7. all those 60 years of age and over
  8. all those 55 years of age and over
  9. all those 50 years of age and over

Page 99





## Where will the COVID-19 vaccine be administered?

- Since 8 December over 500 local vaccination services and nearly 80 hospital hubs have launched what is the largest vaccination programme in the history of the NHS - at the same time as the whole of the health service has been dealing with the intensifying Covid pressures.
- Current hubs in Merton: Wilson Hospital and West Wimbledon Clinic (The Nelson).
- We are continuing to build capacity across the system to offer more vaccinations with additional local vaccination services, hospital and vaccination centres coming on-line.
- Community COVID-19 vaccination pop-up clinic

Thank you for all of your questions today. We hope you have found the session useful.

Please email [mertonccg.getinvolved@swlondon.nhs.uk](mailto:mertonccg.getinvolved@swlondon.nhs.uk) if you have any feedback or suggestions for future sessions.

This page is intentionally left blank





**PlanWimbledon**  
Sustainability Prosperity Community

# Wimbledon Community Forum

25 March 2021



# Have a real say in planning Wimbledon's future

**Vote for PlanWimbledon –  
your neighbourhood planning  
group**

To find out more about PlanWimbledon:  
[www.planwimbledon.org](http://www.planwimbledon.org)



**PlanWimbledon**  
Sustainability Prosperity Community

